



PGA PRIVATE CLUB MATTERS

GOLF CLUB



MAY 2013

TREASURE COAST CHALLENGE CUP CONGRATULATIONS TO OUR WINNING TEAM



In a down to the wire, hard-fought finish, our ladies' Team One brought home the coveted First Cup of the Treasure Coast Challenge Cup to the PGA Golf Club on Monday, April 22, 2013.

The Treasure Coast Challenge Cup consists of a series of match play competitions played among teams from golf clubs in St. Lucie and Martin counties over a five week period. There are four "Cups" within the Challenge Cup, with the First Cup being the highest level of play, matching the abilities of the best players of each of the golf clubs against each other for the honor of being First Cup Treasure Coast Challenge Cup Champions. This year, PGA's Team One was matched against Willoughby, Fairwinds, Monarch, Mariner Sands, and Harbour Ridge golf clubs.

The members of PGA's Team One are Sue Colton and Eileen Burns (Co-Captains), Anne Cannell, Kate Crewse, Kris Hodgkinson, Lorraine Ingrassi, Margene Makinster, Barbara Pagana, Linda Peck and Janice Stenzl.

Please join us in congratulating Team One on their accomplishment in bringing the trophy home to our club! We look forward to retaining this Cup for many years to come!

INSIDE THIS ISSUE

TREASURE COAST CHALLENGE CUP

MOTHER'S DAY BRUNCH

MAY BIRTHDAYS

GOLF TIP OF THE MONTH

SUMMER DINING HOURS

MEET OUR NEW MEMBERS

END OF SEASON PARTY PHOTOS

MONTHLY EVENTS

MAY 3
TRIVIA NIGHT
6:30 PM
PGA COUNTRY CLUB

MAY 10
TRIVIA NIGHT
6:30 PM
PGA COUNTRY CLUB

MAY 17
SHRIMP NIGHT
BY RESERVATION
PGA COUNTRY CLUB

MAY 31
PRIME RIB NIGHT
BY RESERVATION
PGA COUNTRY CLUB



MOTHER'S DAY BRUNCH SUNDAY, MAY 12, 2013

Brunch Buffet

Omelette Station, Lox Platter, Sausage
Bacon, Breakfast Potatoes, French Toast
Danish, Muffins and Fresh Fruit

Sheppard's Pie, Chicken Carbonara
Sweet Chili Shrimp with Asian Vegetables
Steamed Vegetable Medley, Wild Rice Pilaf

Carving Station with Prime Rib & Pork Tenderloin

Dessert Display with Petit Fours, Cheesecakes & Fresh Baked Pies

Seatings from 11:30 AM to 3:00 PM
\$25 Per Person + Tax and Gratuity
Children Under 12 are Half Price
Reservations Required

Please cancel no later than May 9th to avoid charges.



For Reservations

Please contact Maria at 772-201-4012 or
mvalinote@pgahq.com.

MAY BIRTHDAYS

Stop by the Golf Club or Country Club Golf Shop to receive a gift and 30% OFF your next apparel purchase. Cannot be combined with any other discounts. Expires on your birthday next year.

Susan Shreiber 1st
David Gordon 2nd
Matt Hershman 2nd
Mark Hershman 2nd
Carol Kosman 3rd
Robert Miner 4th
John DiEgidio 7th
Margie Stull 7th
Richard Rineberg 8th
Jim Thomson 10th
Carole Reidlich 11th
Bonnie Snavely 11th
Judith O'Neill 11th
Douglas Bliven 12th
Harold Morris 13th
Karen Savader 14th
Suzanne Hamilton 14th
Donna Guthrie 15th
Daniel Doak 16th
Charles Kaplan 17th
Joseph Audette 17th

Mary Ann Sartoris 18th
Lloyd Giardino 20th
Barbara Rineberg 22nd
John Kuehne 22nd
Jeffrey Deighan 23rd
Sue Ann Goldman 23rd
Evelyn Mohr 24th
Roy Levin 26th
Robert Babkie 26th
Doris Brosek 27th
Neal Frampton 28th
Irv Silver 28th
Soo Choung 29th
Dianne Bryan 29th
Steven Collins 29th
William McLaughlin 31st
Donald Tempone 31st



Did we miss your birthday?
Please contact Ashley at
772-340-1444 ext. 100
or acourtney@pgahq.com.



GOLF TIP OF THE MONTH

CHIPPING

By Jamie Fordyce, PGA

The chip shot is used when you are just off the putting surface and you want to make the ball land on the green then roll to the hole. With a lot of practice, you will get confident enough to get up and down most of the time and sometimes even chip in. Use the same grip, stance, and ball position as you would when putting, place your weight on your left hip and raise your right shoulder a little so that you will strike down on the ball.

Before taking the shot, you have to pick a spot about halfway between you and the hole where you want to land the ball. The swinging motion is made without using your wrists, swing your arms back and through as if you were trying to toss a ball underhand onto the green. The ball should come out softly with little backspin so that the ball will roll towards the hole like a putt.



SUMMER DINING HOURS

MAY 13TH THROUGH OCTOBER 1ST

The **Shotmaker's Grille** will be open from 11 AM to 5 PM daily. If the Country Club golf course is closed, the **Shotmaker's Grille** will also be closed.

The **Champion's Grille** and the **Wanamaker Room** will be open from 6:30 AM to 5:00 PM daily.



*****PLEASE NOTE THAT FRIDAY AND SATURDAY NIGHT DINNERS AT THE GOLF CLUB HAVE ENDED FOR THE SUMMER.*****



MEET OUR NEW MEMBERS

ERROLD DUROSEAU
PORT ST. LUCIE, FL



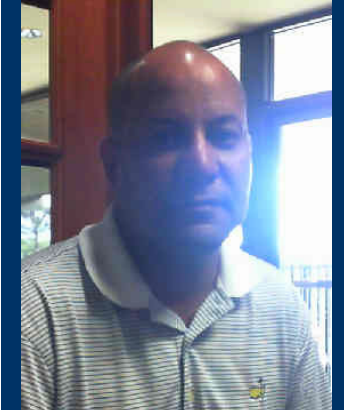
**SERGE DUPONT
AND CAROLE BEGIN**
LAC ETCHEMIN, QC



**HELENE AND BRYAN
ROBERTSON**
GRAUENHURST, ON



**ROGER, MARJORIE,
ROGER, JR. AND
JEFFREY SERRANO**
PORT ST. LUCIE, FL



MARK HERSHMAN
HAGERSTOWN, MD



MATT HERSHMAN
HAGERSTOWN, MD



DONALD CRUM
HAGERSTOWN, MD



MARSHA CRUM
HAGERSTOWN, MD



C. SANFORD TUTTLE
HUDSON, OH



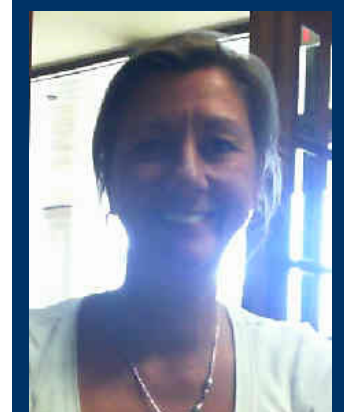
JOHN HEFFERMAN
WATERFORD, CT



CLAUDE HAMEL
SHERBROOKE, QC



JOSEE HAMEL
SHERBROOKE, QC





END OF SEASON PARTY PHOTOS





PGA

GOLF CLUB

JUNE 2013

Sun	Mon	Tue	Wed	Thu	Fri	Sat
Member Course(s)						1
2	3 Water Aero Tennis R	4	5 Water Aero Tennis R	6	7 Trivia Tennis Mah Jongg CC&R	8 Jr Novice Tennis CC&W
9	10 Water Aero Tennis W	11	12 Water Aero Tennis W	13	14 Trivia Tennis Mah Jongg CC&W	15
16	17 Water Aero Tennis R	18	19 Water Aero Tennis R	20	21 Shrimp Night Tennis Mah Jongg CC&D	22
23	24 Water Aero Tennis D	25	26 Water Aero Tennis D	27	28 Prime Rib Night Tennis/Twilight Tennis Mah Jongg CC&D	29
30						
CC&D						